

**DATA SHEET**

Video Surveillance Division

PC Based Client

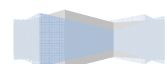
*MEDIUS (Client)*



*Serving the World's  
Mission Critical Applications*

Patronus Laboratories Corporation

Corporate Headquarters: 2780 Black Walnut, San Luis Obispo, CA 93405  
PatronusLabs.com



## Features

- Standardized Programming**  
**PATRONUS LABORATORIES *MEDIUS* Client** systems can interface with over 100 of Patronus Laboratories recording/encoding hardware platforms utilizing Patronus Laboratories industry leading *CONCERT™ Client* software.
- Full Motion Recording**  
 In addition to being a remote client each channel can record between 1/16<sup>th</sup> - 30 frames per second per channel (up to 1920fps in 64 channel systems)
- Multiple Record Modes**  
 Supports multiple record modes including: schedule recording, manual recording, motion detection recording, alarm recording, motion|alarm recording.
- Data Stream Adjustment**  
 Automatically or manually switch between different available network streams to manage network or bandwidth limitations.
- Video Matrix**  
 Optional Analog Video Matrix wall supports up to 20 monitors per client or up to 4 VGA/DVI monitors with 16 cameras per monitor.
- Group Setting**  
 Up to 32 custom connect groups with up to 64 cameras per group can be created and named to facilitate "single mouse click" connection to camera groups.
- Joystick Support**  
 Supports a state-of-the-art 3-axis, RS-232 Joystick. Provides easy operator control of Concert Software and remotely located PTZ cameras.
- Instant Playback**  
 Supports instant playback of up to 480 seconds on each channel connected facilitating instant review of a suspicious event.
- Digital Zoom**  
 Supports digital zooming of live and playback video for advanced analysis.
- Voice over IP**  
*CONCERT™ Client* can initiate VoIP two-way audio chat with any connected recording or encoding device.

# MEDIUS Series

*(Client)*

...From Patronus Labs

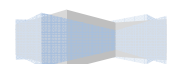


**"The World's most powerful video servers, disserve the most powerful video clients!"**

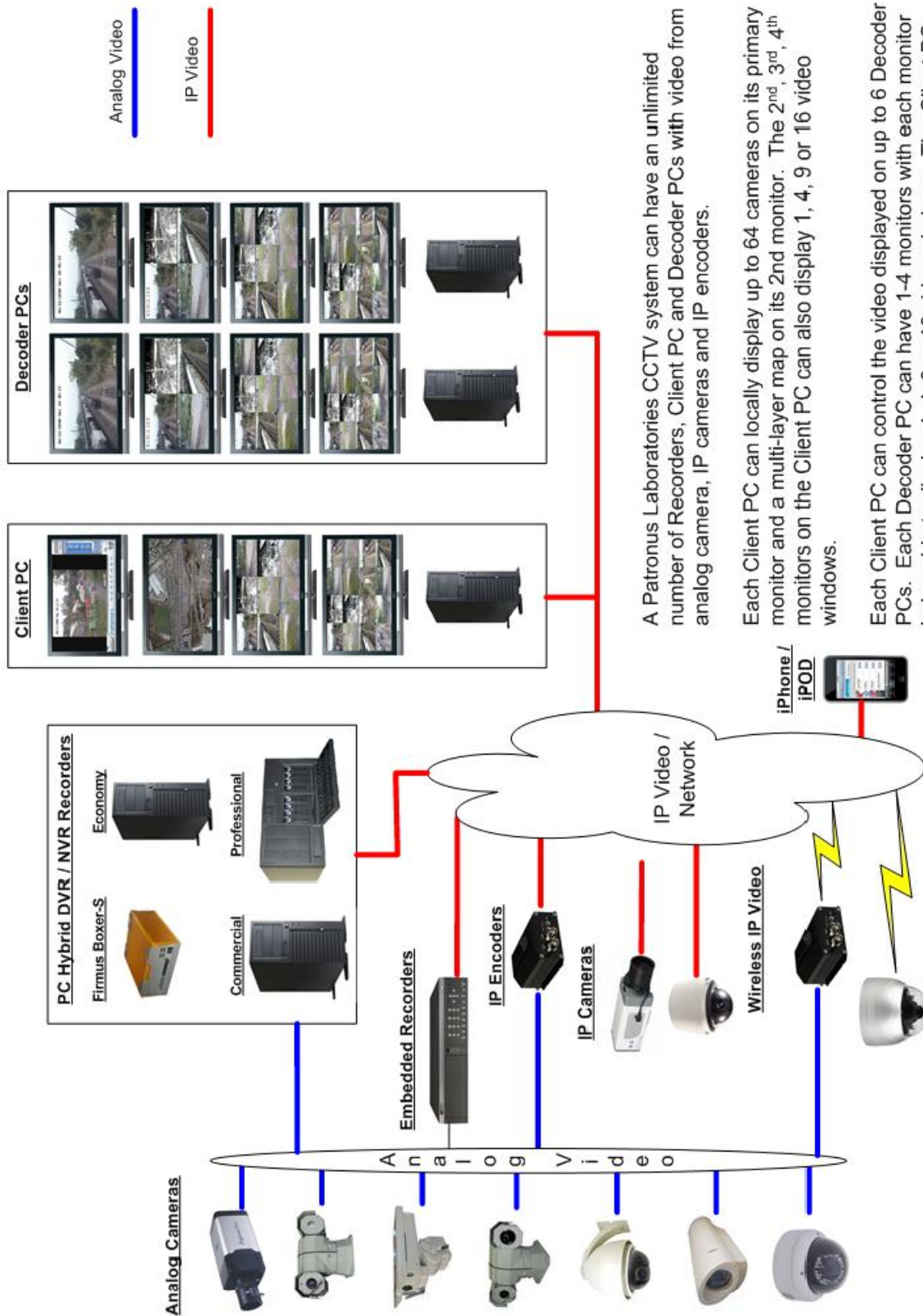
## Overview

**Patronus Labs** offers an extensive line of PC based Digital Video and Network Video Hybrid recorders (more than 50 models). The *MEDIUS Client*, utilizing Patronus Laboratories *CONCERT™* software, is fully interoperable with all *MEDIUS* server models and with all of PLC's embedded encoder and recorder hardware platforms. The *MEDIUS Client* can be configured with over 1000 remote *MEDIUS* servers. Each *MEDIUS* server can support up to 64 channels of full motion video recording. This incredible capacity provides the ability for a single *MEDIUS Client* to access and manage up to 64,000 channels of video, up to 20 analog matrix monitors. The *CONCERT™ Client* can also locally record any channel or group of channels to which, it is connected.

PRODUCT IDENTIFICATION CHART	
Division	Category
Access Control	Camera, Board
Computer Components	Camera Bullet
Fixed Platform	Camera, Dome
Housings/Mnts/Enclosures	Camera, Mini
Mobile Platform	Cam, Professional
Power Gen./Storage	Camera, Specialty
Tools/Equipment	Cam, Speed dome
Video Surveillance	Decoder
Wire/Cables/Connectors	Encoder
Wireless Equipment	Encoder/Recorder



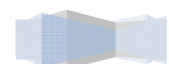
**Video System Flow**



A Patronus Laboratories CCTV system can have an unlimited number of Recorders, Client PC and Decoder PCs with video from analog camera, IP cameras and IP encoders.

Each Client PC can locally display up to 64 cameras on its primary monitor and a multi-layer map on its 2nd monitor. The 2<sup>nd</sup>, 3<sup>rd</sup>, 4<sup>th</sup> monitors on the Client PC can also display 1, 4, 9 or 16 video windows.

Each Client PC can control the video displayed on up to 6 Decoder PCs. Each Decoder PC can have 1-4 monitors with each monitor being able to display 1, 4, 9 or 16 video windows. The Client PC can control 28 monitors displaying 496 channels of video.



## Specifications

Features	Economy Tower (VSRP0049)	Commercial Tower (VSRP0050)
Audio compression	Per IP Device settings	
Audio Output	1 channel 1/8 inch jack	
Bit rate	Per IP Device settings	
Communication interface	1 x RJ45 10M/100 UTP network port	2 x RJ45 10M/100/1000M UTP network port
Com Port*	1	1 Default (up to 3 available)
Frame Rate*	960 fps	1920 fps
Operating System	Windows 7 32-bit	
Optical Drive	1 DVD-RW	
Power Supply*	450W 110-220VAC 50-60Hz	650W, Optional 600W redundant 110-220VAC 50-60Hz
RS-485 PTZ Control*	Optional	
Size	198 x 465 x 425 mm   7.8" x 18.3" x 16.7"	423 x 190 x 4350 mm   16.7" x 7.5" x 17.1"
Stream Type	Per IP Device settings	
Video Storage*	Up to 6,000GB	Up to 8,000GB
Video Compression	Per IP Device settings	
Video Output (Analog)*	0 Default, up to 8	0 Default, up to 20
Video Output (VGA)*	1	1 Default, up to 4
Weight**	14Kg   30.8lbs	
Working humidity	10%--90%	
Working temperature	5C~+50C   40F~122F	
* Configuration Dependant		
** Estimated, Configuration Dependant		

## System Options

Analog Video Decoding	Optional up to 20 monitors outputs
Operating System Redundancy	RAID 0 Optional (Commercial Tower)
Power Supply	Hot-swap Redundant optional (Commercial Tower)
Video Data Storage Capacity	Up to 8,000GB
Video Data Storage Redundancy	RAID 5 Optional (Commercial Tower)
Video Output (VGA)	Optional up to 4

